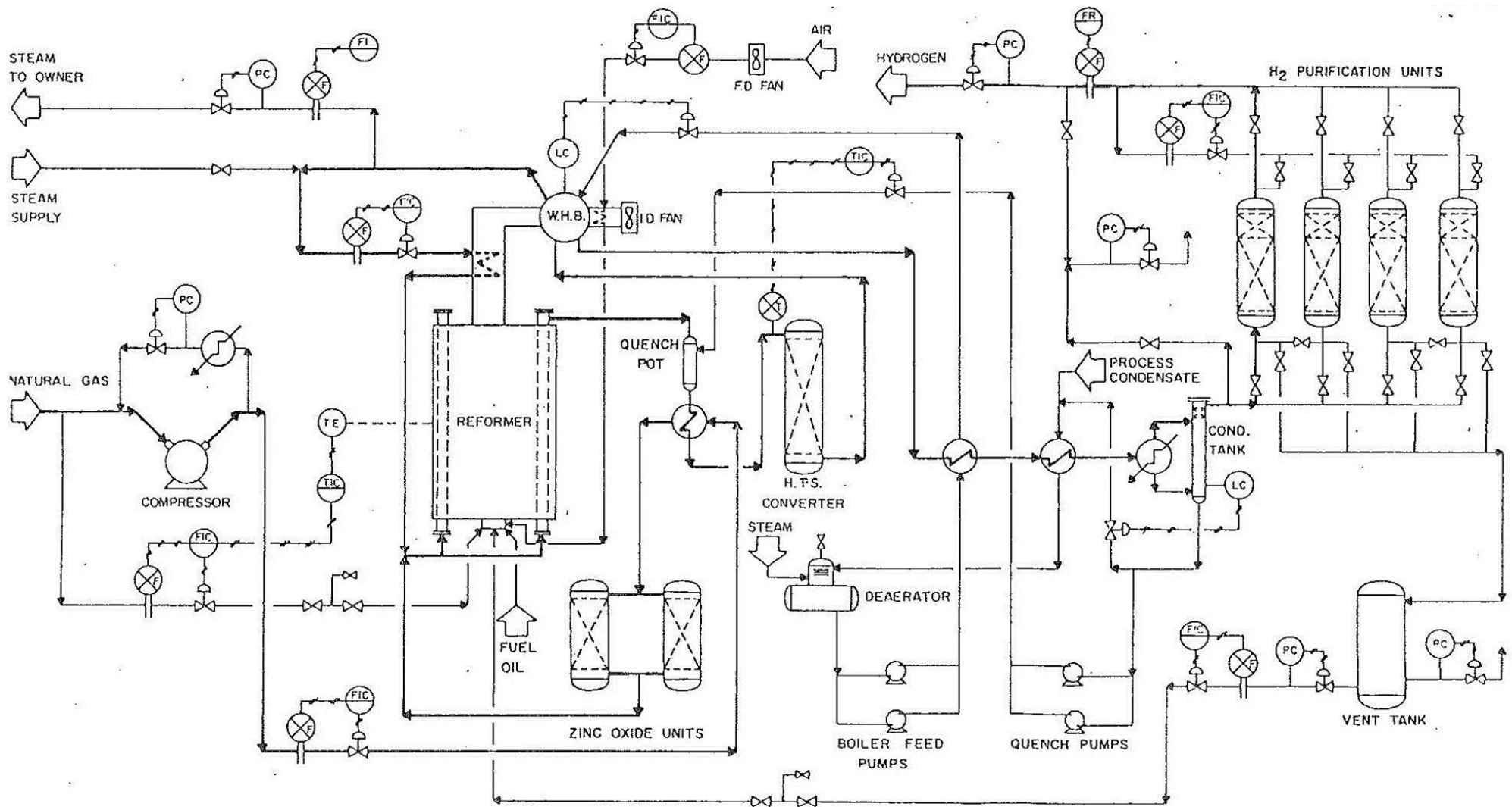


Item 6530. Hydrogen Gas Plant

Hydro-Chem: Capacity 90,000 scfh at 200 psig with purity to 99.99%



- Reformer design: Fuel gas can be either natural gas or propane; feed is natural gas
- Export steam boiler at 5,000 to 6,000 pph at 250 psig out of this plant back to Process
- Currently configured with 10 tubes (half) for capacity of 45,000 scfh with 5 spare tubes in storage
- Was in operation until mid 2012 – still under power, heat, and nitrogen blanket. Stored correctly

